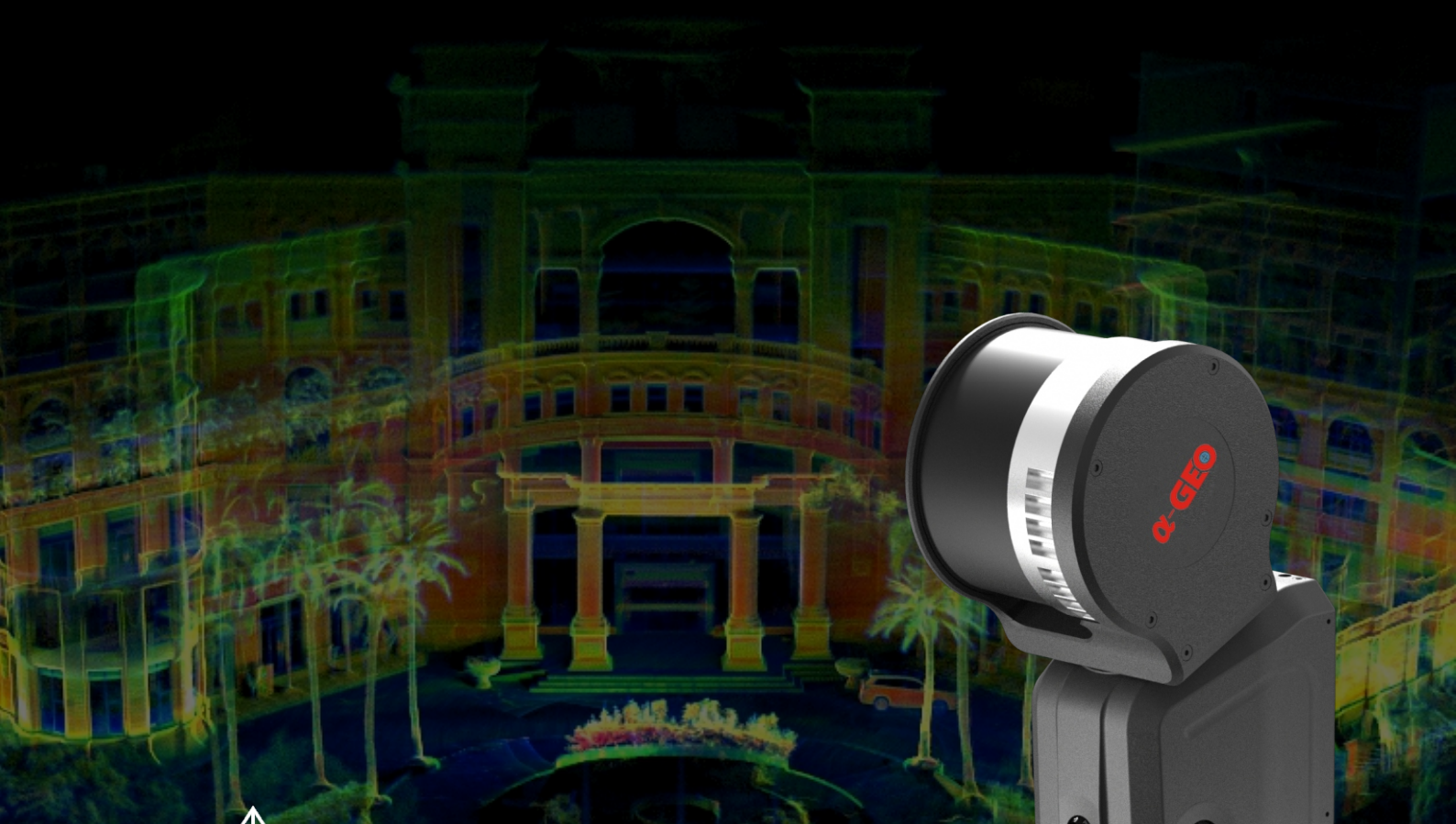




Lixel L2

Real-time Modeling, Realist Color



120m working range



320,000 p/s



3 color cameras



±1.2cm accuracy^[1]



Color point cloud
output directly



Diverse sensor fusion improves performance to a higher level

Highly integrated LIDAR, panoramic camera, high-precision IMU module and high-performance computing unit can achieve 360 panoramic scanning without external equipment.

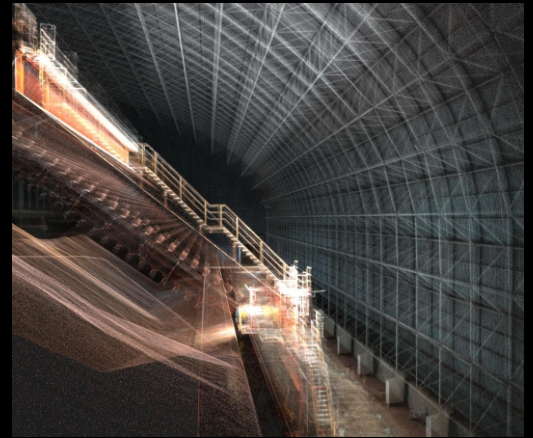
120m measuring distance can cover a wider scanning range, making scanning job more efficient.

True color point cloud, real scene reproduction

Generating true-color point clouds in real-time with rich details, and delicate depiction of the real world.

Multi-SLAM core algorithm, strong scene adaptability

Built-in self-developed core algorithms, fusion of laser, vision, and gns module, that ensures excellent performance in complex/degraded scenes such as open spaces, tunnels, and multiple parts.



Multi-channel LiDAR, panoramic scanning

With the 16-channel Lidar, coupling with the point rate of 320,000 points/second, really makes the distribution of point clouds more dense



Real-time preview, what you see is what you get

The point cloud model is output directly in las format that the reconstruction effect can be viewed in real-time, modeling while scanning, deliver what you see and scan.

Application scenarios



Land Survey



Mining Survey



Engineering Survey



Agriculture & Forest



Urban Renewal



Emergency Survey



Software kit

PC



LixelStudio

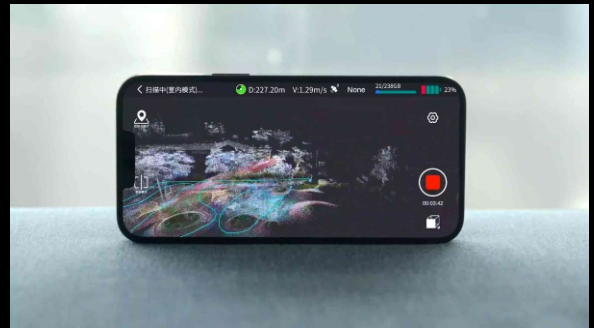


An all-in-one 3D post-processing software offers a range of features, including point cloud viewing, editing, modeling generation, and post-processing.

APP



LixelGO



It is a mobile APP for the regular scanning work-flow operation, preview of scanning results, and one-screen monitoring of device status.

Specifications

Working range	0.5m ~ 120m
Laser class	Class 1/905nm
Laser FOV	360°×270°
Processing mode	Real-time/Post-processing
Scanning speed	320,000 points/second
Operating temperature	-20°C ~ +50°C
Power consumption	<30W
Storage capacity	1TB
Operating time	1.5 hrs
Protection level	IP54
Horizontal accuracy	≤0.015°
Number of camera	3
Power supply	Fast-lock battery/external power
Dimensions (main body)	138.45mm(L)×90mm(W)×227.32mm(H)
Weight	<1.6kg
Visual-aided positioning	Supports
Real-time color point cloud	Supports
5G real-time transmission	Supports
RTK fusion	Supports
Resume scanning from break point	Supports
Point cloud format	*.las
Relative accuracy	±1.2cm
Absolute accuracy	≤3cm
Repeat accuracy	≤2cm
Battery capacity	46.8wh
RTK frequency	BDS: B1I, B2I, B3I
	GPS: L1C/A, L2P(Y), L2C, L5
	GLONASS: L1, L2
	GALILEO: E1, E5a, E5b



GUANGZHOU ALPHA GEO-INFO CO.,LTD

Address: Building No.1, Gaopu Road No.68, Tianhe District, Guangzhou 510630, Guangdong, China

Website: www.alphageo-info.com

E-mail: alphageo@aliyun.com

Phone: +8618565149475