



# ALPHA TG25

## AUTO TIDE GAUGE



High Precision



High Strength



Corrosion Protection



Anti-interference

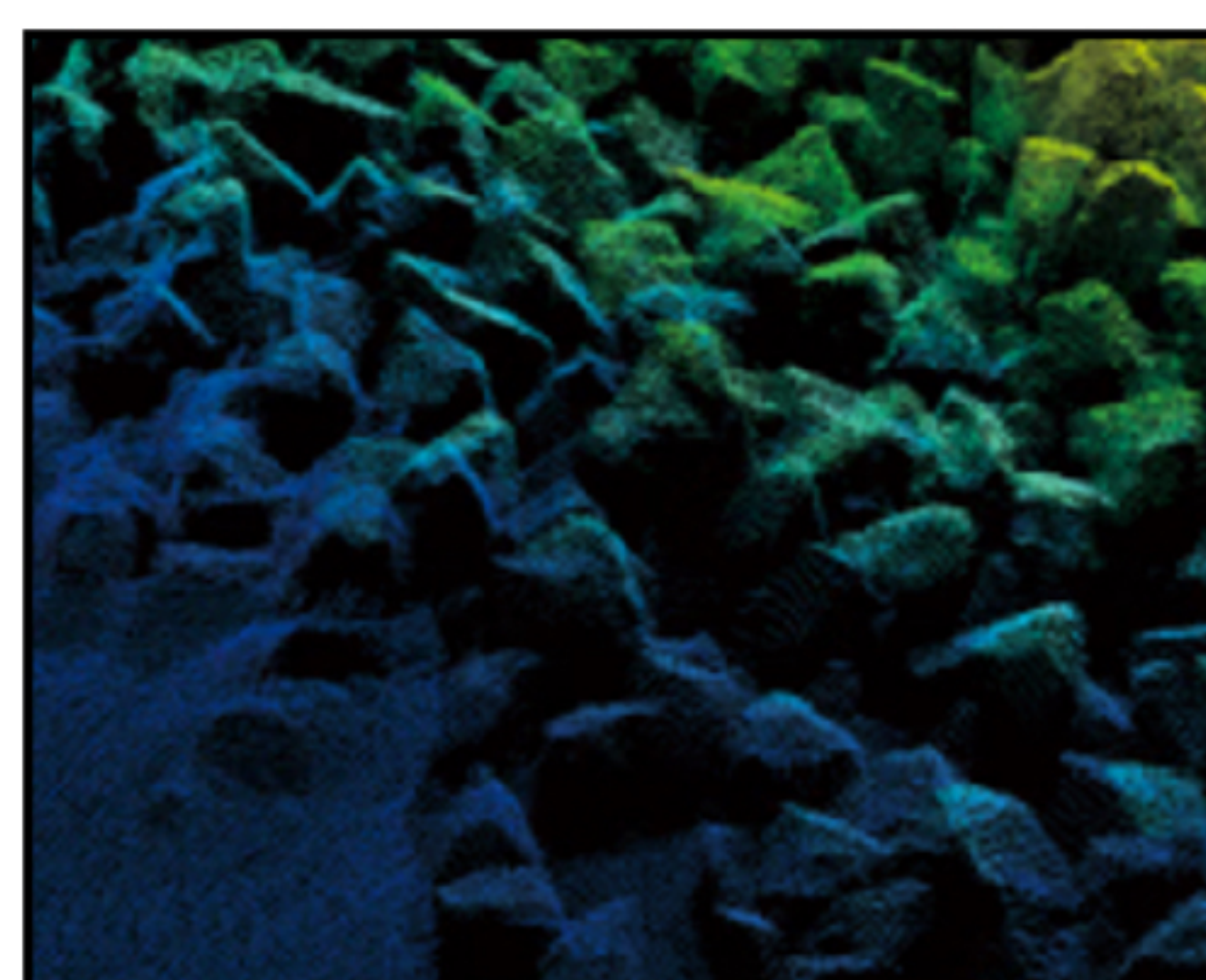


# ALPHA TG25 Introduction

The ALPHA TG25 Auto Tide Gauge features high precision, low power consumption, and large storage capacity. Users can set the sampling interval from 1 second to 18 hours as needed, or configure event-triggered recording. It also supports intermittent average value recording. The pressure sensor is made of 316L anti-corrosion material and titanium alloy, with precision temperature compensation calibration, ensuring users obtain highly accurate water pressure or water depth data.

The ALPHA TG25 comes with feature-rich software, CWManager. The device connects to a computer via a USB cable, allowing users to configure parameters such as sampling intervals and storage modes through CWManager. The software CWManager also supports generating curve reports, exporting spreadsheets, and more. It facilitates water level unit conversions and includes instrument verification, calibration, and maintenance programs.

The ALPHA TG25 is designed with ultra-low power consumption. When sampling once per hour, the device can operate continuously for years. The replaceable battery design allows users to easily swap batteries themselves, while the large-capacity memory can store up to 2 million measurement data points. The internal high-precision clock chip has a maximum drift of less than  $\pm 5\text{ppm/year}$  ( $\pm 158\text{ seconds/year}$ ). This device is widely used in water pressure and water level measurement and recording for oceans, lakes, rivers, groundwater, and other water bodies. It serves industries such as marine research, environmental protection, groundwater monitoring, hydrology, reservoirs, agriculture, and meteorology.





## Technical Specifications

Pressure Accuracy	0.05% FS
Pressure Resolution	0.001Kpa ( $\leq 0.0001\%$ FS)
Pressure Range	0~50m, 0~200m (selectable)
Sampling Interval	1 second to 18 hours (user-configurable)
Maximum Sampling Frequency	8Hz
Temperature Accuracy	0.3°C
Temperature Resolution	0.01°C
Temperature Range	-5°C to 40°C
Clock Drift	$\pm 5$ PPM/year ( $\pm 158$ seconds/year)
Storage Memory	2 million data points
Communication Port	RS485
Battery	3.6V lithium battery

### Recording Modes

Intermittent average value recording

Fixed time interval recording

Conditional event-triggered recording

Depth profile recording

High-speed mode recording

### Device Specifications

Dimensions	$\varnothing 25\text{mm} * 237\text{mm}$ length (self-recording, including cover)
Material	Aluminum alloy housing for 50m range, titanium alloy housing for 200m range
Weight	280g